

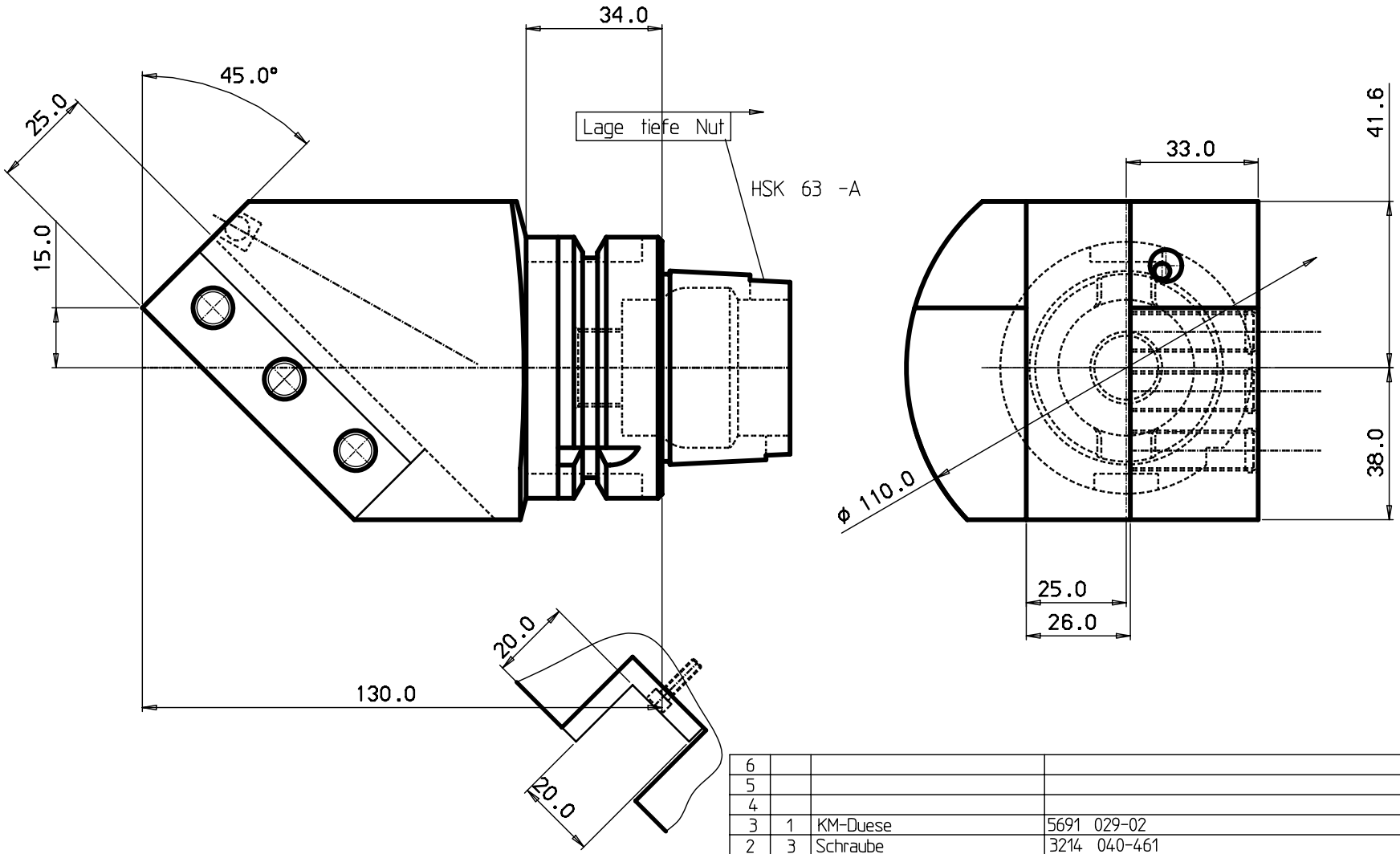
| | | | | | | | | |
|---------------|------------------|------|------|---|--|---|---|---|
| MOD: LOCATION | CHANGE REFERENCE | DATE | SIGN | (120) - 315 (150) - 400 (180) - 500 (200) - 600 (250) - 800 (315) - 1000 | ± 0.05 ± 0.10 ± 0.15 ± 0.20 ± 0.30 ± 0.50 | 6 | 7 | 8 |
| 1 | 2 | 3 | 4 | 5 | 6 | 7 | 8 | |

DESIGN OFFICE | DRAWING NUMBER

Show of thread and chamfered ends of all the parts
 are to be done with an appropriate chamfer
 and chamfer radius in order to ensure the safety of the machine

100 mm
90
80
70
60
40
30
20
10
0

MICROFILMED



| | | | | | |
|---------------|------------------|------|------|---|---|
| MOD: LOCATION | CHANGE REFERENCE | DATE | SIGN | Tolerance systems acc to ISO Surface roughness Ra um | Where tolerance not stated: For threads SS-iso 965/3 For dimensions SS 715 Medium |
| 1 | 2 | 3 | 4 | 5 | |

| | | | | | |
|------|------|-------------|----------|--------------|-----------------|
| 6 | | | | | |
| 5 | | | | | |
| 4 | | | | | |
| 3 | 1 | KM-Duese | | 5691 029-02 | |
| 2 | 3 | Schraube | | 3214 040-461 | |
| 1 | | | | | |
| ITEM | QNTY | DESCRIPTION | MATERIAL | REMARKS | RELATED DRAWING |

| | | | | | | |
|----------------|-----------------------------------|-------|---------|------|-------|------------|
| CATEGORY | DESIGNED | DRAWN | CHECKED | DATE | SCALE | SUPERSEDES |
| TITLE | | | | | | |
| <i>Adapter</i> | | | | | | |
| REFERENCE | MODIFICATION | | | | | |
| | A | B | C | D | E | F |
| | DESIGN OFFICE DRAWING NUMBER | | | | | |
| | HSK63A-ASHL45-15130-25(20) | | | | | |

