

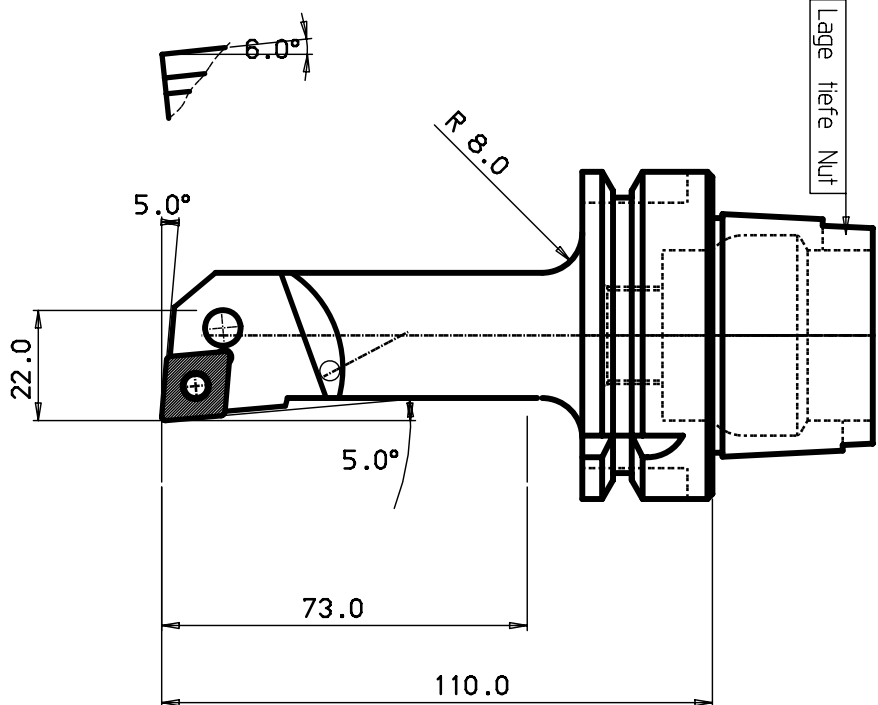
MOD. LOCATION	CHANGE REFERENCE	DATE	SGN	(120) - 315 (315) - 1000	±0.50 ±0.80	(50) - 120 (120) -	±0.20 ±0.30	7	8
---------------	------------------	------	-----	-----------------------------	----------------	-----------------------	----------------	---	---

DESIGN OFFICE	DRAWING NUMBER
---------------	----------------

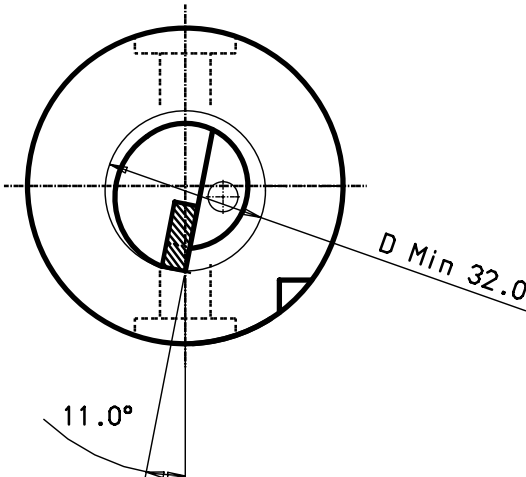
Show of hatched area to complete form of an individual part
 and to be used in the case of assembly or disassembly. The hatched
 area always means the property of the SHAWK COMPANY.

100 mm
90
80
70
60
40
30
20
10
0

MICROFILMED



HSK 63 -A



HM-Platte CN.. 120408

3	Schraube	438.3-832M
2	Kniehebel	438.3-841-1
1	Schaft	

ITEM	QNTY	DESCRIPTION	MATERIAL AND REMARKS	RELATED DRAWING	UTM	ISO
CATEGORY	DESIGNED	DRAWN	CHECKED	DATE	SCALE	SUPERSEDES

Tolerance systems acc to ISO
Surface roughness Ra um

Where tolerance not stated:
For threads SS-iso 965/3
For dimensions SS 715 Medium

Dimension	Tol	Angle (Shortest adjacent side in mm)	Tol
-6	±0.10	10	± 1'
(6) - 30	±0.20	10	± 30'
(30) - 120	±0.30	10	± 20'
(120) - 315	±0.50	(50) - 120	± 10'
(315) - 1000	±0.80	(120) -	

Schneidkopf

REFERENCE: ABCDEFGHIJKLMNOPQRSTUVWXYZ

MODIFICATION: HSK63A-PCLNR-17110-12



MOD. LOCATION	CHANGE REFERENCE	DATE	SGN	(120) - 315 (315) - 1000	±0.50 ±0.80	(50) - 120 (120) -	±0.20 ±0.30	7	8
---------------	------------------	------	-----	-----------------------------	----------------	-----------------------	----------------	---	---