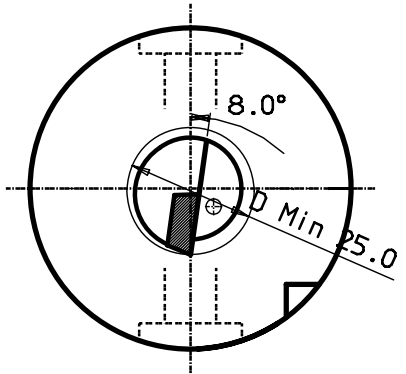
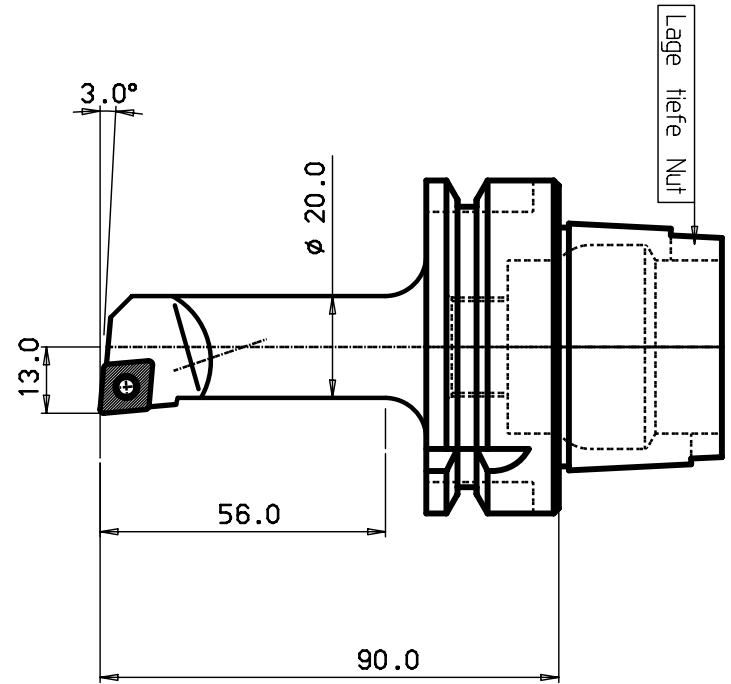


Show of thread over the complete length of an HSK shaft
 and is not in the scope of our responsibility. The
 file quality means the property of the shaft (DIN 618)

100 mm
 90
 80
 70
 60
 40
 30
 20
 10
 0

MICRIFILMED



HM-Platte CCMT09T308

4	1				
3	1				
2	1	Schraube f. Platte			5513 020-09
1					

ITEM	QNTY	DESCRIPTION	MATERIAL AND REMARKS	RELATED DRAWING	UNIT	SIZE
CATEGORY	DESIGNED	DRAWN	CHECKED	DATE	SCALE	SUPERSEDES

TITLE
Schneidkopf

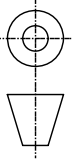


REFERENCE	MODIFICATION	ABCDEFGHIJKLMNPRSTUVWXYZ
	DESIGN OFFICE	DRAWING NUMBER

HSK63A-SCLCR-13090-09

Tolerance systems acc to ISO
 Surface roughness Ra um
 Where tolerance not stated:
 For threads SS-iso 965/3
 For dimensions SS 715 Medium

Dimension	Tol	Angle (Shortest adjacent side in mm)	Tol
-6	+0.10	-10	± 1'
(6) - 30	+0.20	-50	± 30'
(30) - 120	+0.30	-120	± 20'
(120) - 315	+0.50	-	± 10'
(315) - 1000	+0.80	-	



340-07010-2

MOD. LOCATION	CHANGE REFERENCE	DATE	SIGN
---------------	------------------	------	------