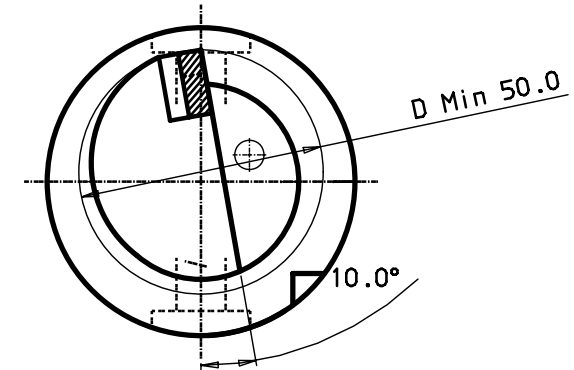
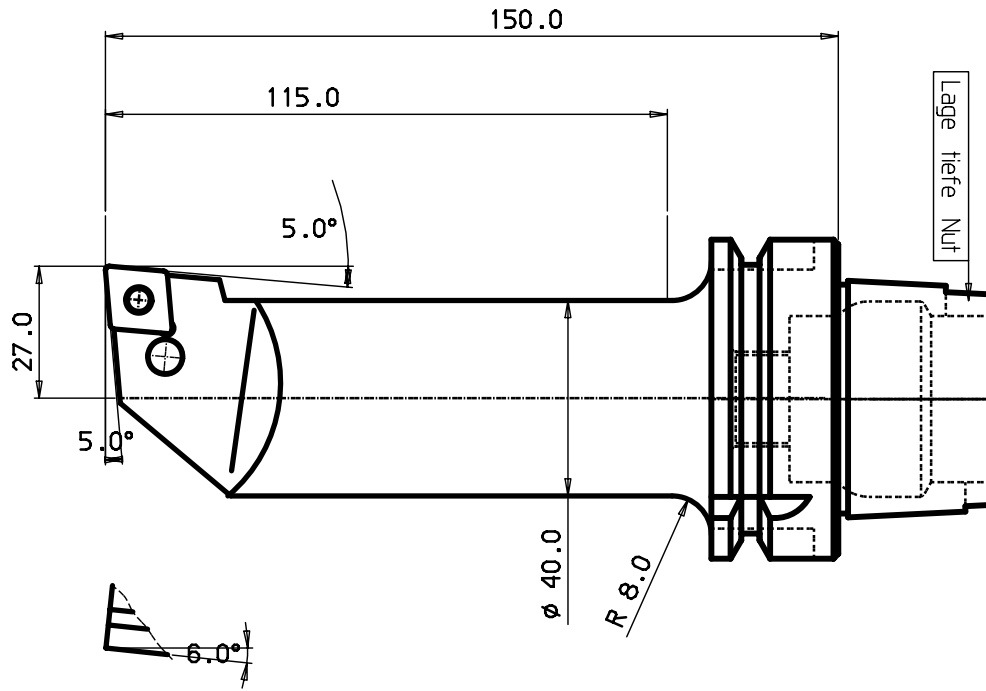


MOD.	LOCATION	CHANGE REFERENCE	DATE	SIGN
1		2	V	3
1		2		3
				4
				5
				6
				7
				8

Show of length and diameter lines of an HSK tool
 and its tool to be used within an HSK tool holder
 its bearing means the property of the SHANK (DRAWING)

100 mm
 90
 80
 70
 60
 40
 30
 20
 10
 0

MICROFILMED



HM-Platte CN.. 120408

5	Schraube	174.3-821
4	Rohrstift	174.3-861
3	Unterlage	171.31-850M
2	Knihebel	174.3-84.1M
1	Schaft	

ITEM	QNTY	DESCRIPTION	MATERIAL AND REMARKS	RELATED DRAWING	UTM	LSYE
CATEGORY	DESIGNED	DRAWN	CHECKED	DATE	SCALE	SUPPERSEDES

TITLE: **Schneidkopf**

REFERENCE: _____

MODIFICATION: | A | B | C | D | E | F | G | H | J | K | L | M | N | P | R | S | T | U | V | X | Y | Z

DESIGN OFFICE | DRAWING NUMBER
HSK63A-PCLNL-27150-12



Tolerance systems acc to ISO
 Surface roughness Ra um

Where tolerance not stated:
 For threads: SS-iso 965/3
 For dimensions: SS 715 Medium

Dimension	Tol	Angle (Shortest adjacent side in mm)	Tol
6 - 30	±0.10	10	± 1'
30 - 120	±0.20	10	± 30'
120 - 315	±0.30	10	± 23'
315 - 1000	±0.50	10	± 20'

MOD.	LOCATION	CHANGE REFERENCE	DATE	SIGN
1		2	V	3
1		2		3
				4
				5
				6
				7
				8