

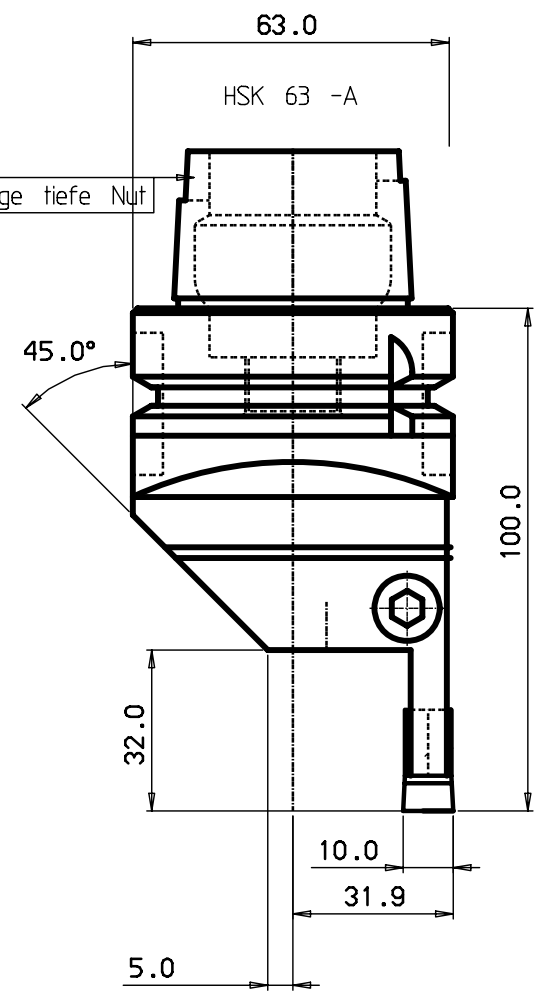
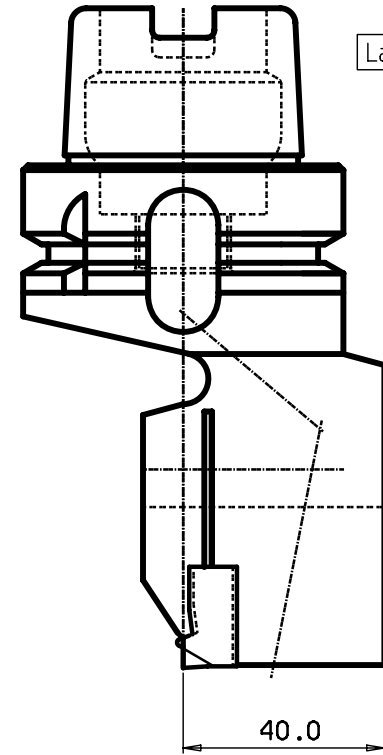
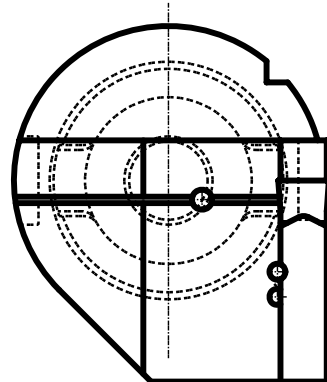
MOD. LOCATION	CHANGE REFERENCE	DATE	SIGN	TOL (7/15) - 3D ±0.50 ±0.80	(5/1) -120 ± 20' ± 10'	7	8
1	2	3	4	5	6	7	8

DESIGN OFFICE | DRAWING NUMBER

Spinnen of linked and disassembling lines of an item parts and sub-assembly of the drawing are the property of the company.

100 mm
90
80
70
60
40
30
20
10
0

MICROFILMED



PL.GR "8"
HM-Platte
N151.2-1000-80-4G

3	1	Gewindestift	M4x10
2	1	Schraube	
1	1		

ITEM	QNTY	DESCRIPTION	MATERIAL AND REMARKS	RELATED DRAWING	UTBL	LSZE
CATEGORY	DESIGNED	DRAWN	CHECKED	DATE	SCALE	SUPERSEDES

Tolerance systems acc to ISO
Surface roughness Ra um

Where tolerance not stated:
For threads SS-iso 965/3
For dimensions SS 715 Medium

Dimension	Tol	Angle (Shortest adjacent side in mm)	Tol
-6	±0.10	10	± 1'
(6) - 30	±0.20	10	± 30'
(30) - 120	±0.30	10	± 20'
(120) - 315	±0.50	10	± 10'
(315) - 1000	±0.80	10	± 10'

Schneidkopf



REFERENCE	MODIFICATION	ABCDEFGHIJKLMNPRSTUVWXYZ
	DESIGN OFFICE	DRAWING NUMBER

MOD. LOCATION	CHANGE REFERENCE	DATE	SIGN	TOL (7/15) - 3D ±0.50 ±0.80	(5/1) -120 ± 20' ± 10'	7	8
1	2	3	4	5	6	7	8

