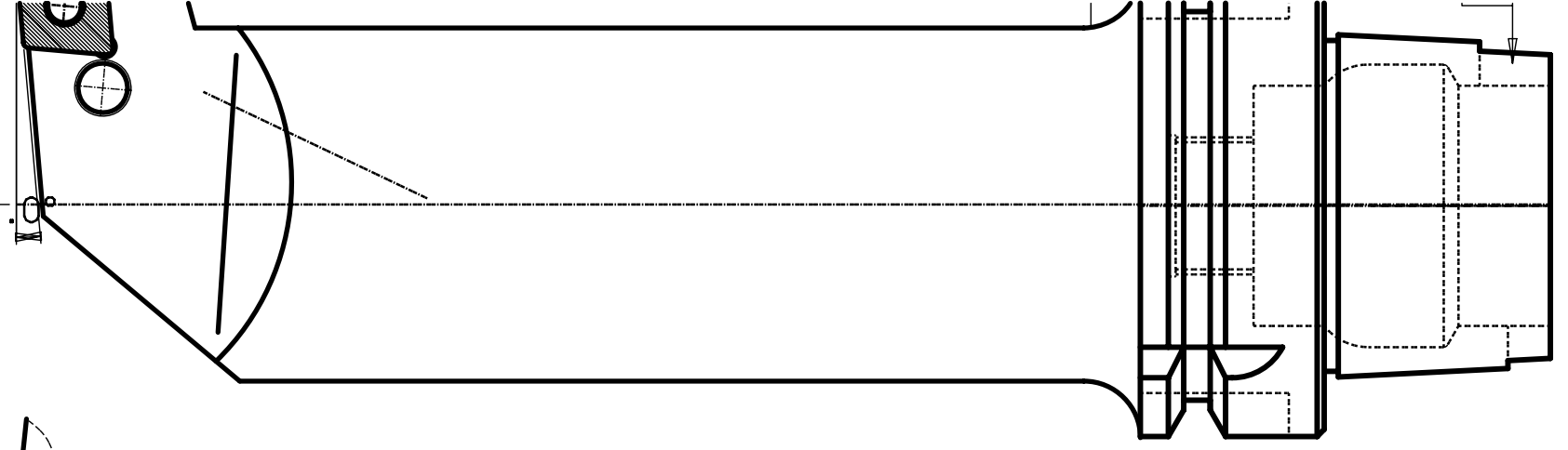


HSK 63 -A

HM-PL

Schneid



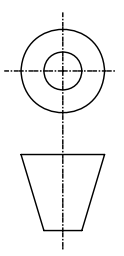
35.0

5.0

6.0°

100 mm
90
80
70
60
40
30
20
10
0

MICROFILMED



340-CPD100-2

| | | |
|---|--|-----------|
| 5 | | Schraube |
| 4 | | Rohrstift |
| 3 | | Unterlage |
| 2 | | Knihebel |
| 1 | | Schaft |

| ITEM | Q'NTY | DESCRIPTION |
|----------|----------|-------------|
| CATEGORY | DESIGNED | DRAWN |
| | | CHECKED |

| | | | |
|-----------|---------|--|--|
| TITLE | Schneid | | |
| REFERENCE | | | |

Tolerance systems acc to ISO
Surface roughness Ra um

Where tolerance not stated:
For threads SS-iso 965/3
For dimensions SS 715 Medium

| Dimension | Tol | Angle (Shortest adjacent side in mm) | Tol |
|--------------|-------|---|-------|
| -6 | ±0.10 | 10 | ± 1' |
| (6) - 30 | ±0.20 | (10) - 50 | ± 30' |
| (30) - 120 | ±0.30 | (50) - 120 | ± 20' |
| (120) - 315 | ±0.50 | (120) - | ± 10' |
| (315) - 1000 | ±0.80 | | |

| MOD | LOCATION | CHANGE | REFERENCE | DATE | SIGN |
|-----|----------|--------|-----------|------|------|
| 1 | | 2 | | 3 | |
| 4 | | 5 | | 6 | |