

5

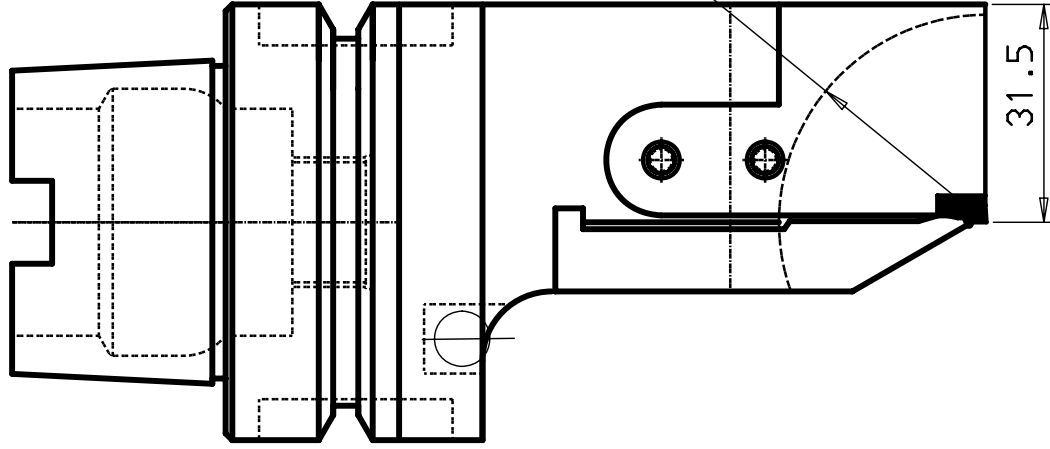
6

7

8

DESIGN OFFICE | DRAWING NUMBER

HSK 63 -A



Lage tiefe Nut

45.0°

R 30.0

31.5

110.0

30.0

20.0

HM-Platte 151.2-300

ITEM	QNTY	DESCRIPTION	MATERIAL AND REMARKS	RELATED DRAWING	LIBR	SIZE
5	1	Kugelduese				
4	1	Schraube				
3	2	Schraube				
2	1	Unterlage	15127-30-30-HSK			
1	1	Spannfinger	R15127-30-30-HSK			

acc to ISO

S Ra um i

ot stated:

965/3

715 Medium

10	Tol
20	± 1'
30	± 30"
50	± 20"
80	± 10"

Schneidkopf



REFERENCE

MODIFICATION

DESIGN OFFICE | DRAWING NUMBER

ABCDEFGHIJKLMNOPQRSTUVWXYZ

HSK63A-R151.27-20110-3

5

6

7

8