

340-0700-2

MOD	LOCATION	CHANGE	REFERENCE	DATE	SIGN
		2	V	3	

side in mm	± 1'
(6) - 30	±0.20
(30) - 120	±0.30
(120) - 315	±0.50
(315) - 1000	±0.80

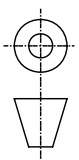
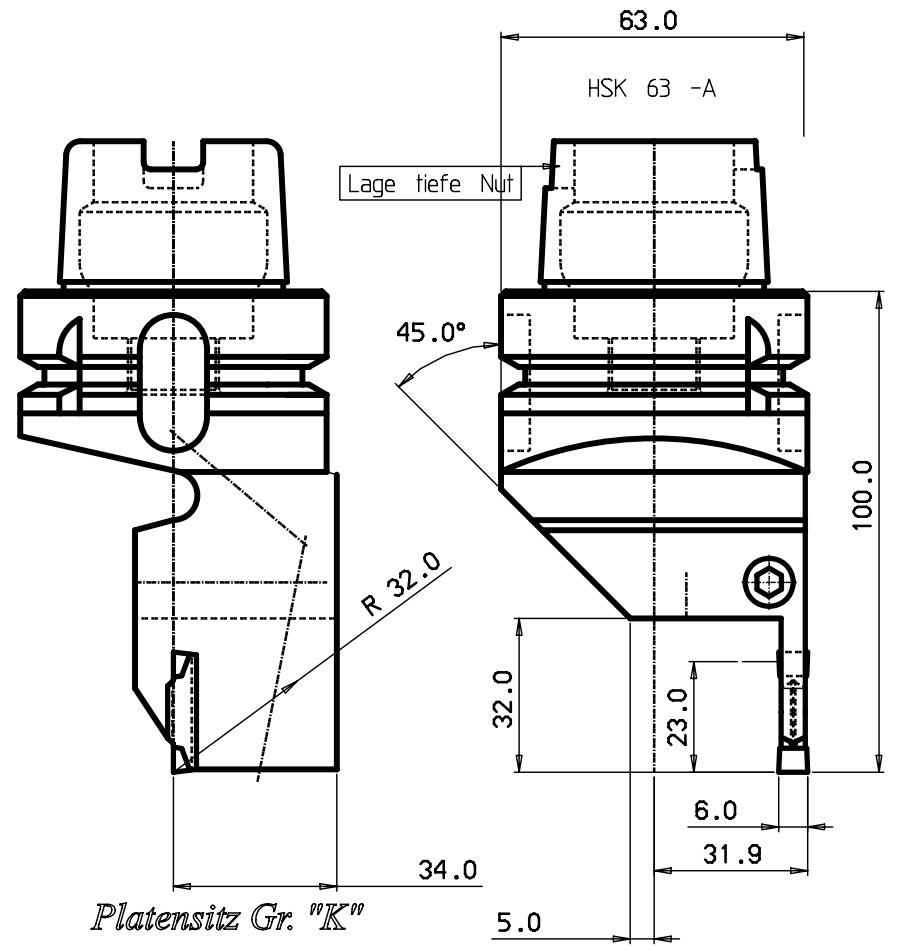
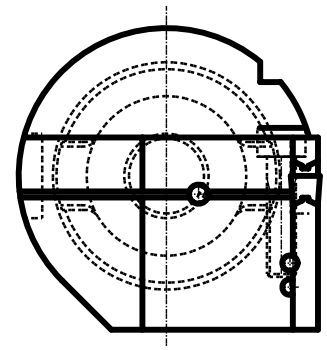
side in mm	± 1'
(6) - 10	± 0.10
(10) - 50	± 0.20
(50) - 120	± 0.30
(120) -	± 0.40

MODIFICATION	ABCDEFGHIJKLMNPRSTUVWXYZ
DESIGN OFFICE	DRAWING NUMBER
HSH63A-RF123K-2332100-B	

Show in detail one to complete lines of an item and not to be used for any other purpose. The drawing remains the property of HAVRANEK COMPANY.

100 mm
90
80
70
60
40
30
20
10
0

MICROFILMED



340-0700-2

MOD	LOCATION	CHANGE	REFERENCE	DATE	SIGN
		2	V	3	

Tolerance systems acc to ISO
Surface roughness Ra um

Where tolerance not stated:
For threads SS-iso 965/3
For dimensions SS 715 Medium

Dimension	Tol	Angle (Shortest adjacent side in mm)	Tol
(6) - 30	±0.10		± 1'
(30) - 120	±0.20	(6) - 10	± 30'
(120) - 315	±0.30	(50) - 50	± 20'
(315) - 1000	±0.50	(120) -	± 10'

3	1	Gewindestift	M4x10			
2	1	Schraube	3212 012-360			
1	1					
ITEM	QNTY	DESCRIPTION	MATERIAL AND REMARKS	RELATED DRAWING	UNIT	SIZE
CATEGORY	DESIGNED	DRAWN	CHECKED	DATE	SCALE	SUPERSEDES

TITLE		Schneidkopf			
REFERENCE		MODIFICATION		ABCDEFGHIJKLMNPRSTUVWXYZ	
		DESIGN OFFICE		DRAWING NUMBER	
		HSH63A-RF123K-2332100-B			