

(E0) - 120	±0.30
(I20) - 315	±0.50
(E15) - 1000	±0.80

(E0) - 120	±0.30
(I20) - 315	±0.50
(E15) - 1000	±0.80

(E0) - 120	±0.30
(I20) - 315	±0.50
(E15) - 1000	±0.80

1  
1

2  
2

V  
3

3  
3

4  
4

5  
5

6  
6

7  
7

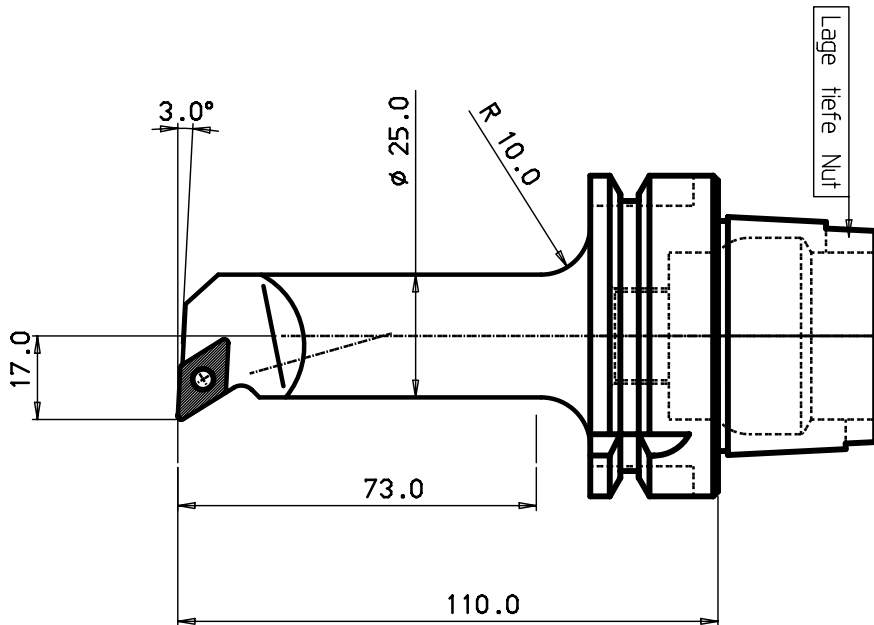
8  
8

DESIGN OFFICE | DRAWING NUMBER

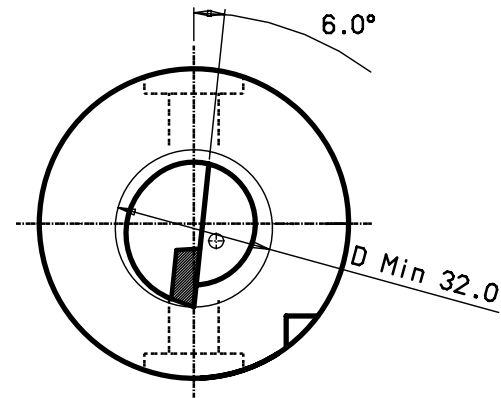
Shank is hardened over the complete length of any thread and is to be ground where appropriate to the drawing needs the property of the shank is to be maintained

100 mm  
90  
80  
70  
60  
40  
30  
20  
10  
0

MICROFILMED



HSK 63 -A



HM-Platte DCMT 11T308

2	1	Schraube f. Platte	5513 020-10 M3.5
1			

ITEM	QNTY	DESCRIPTION	MATERIAL AND REMARKS	RELATED DRAWING	LIBR	LSZE
CATEGORY	DESIGNED	DRAWN	CHECKED	DATE	SCALE	SUPERSEDES

TITLE  
**Schneidkopf**

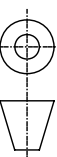


REFERENCE	MODIFICATION	DESIGN OFFICE	DRAWING NUMBER
	ABCDEFGHIJKLMNPQRSTUWXYZ		HSK63A-SDUCR-17110-11

Tolerance systems acc to ISO  
Surface roughness Ra um

Where tolerance not stated:  
For threads SS-iso 965/3  
For dimensions SS 715 Medium

Dimension	Tol	Angle (Shortest adjacent side in mm)	Tol
-6	±0.10		
(6) - 30	±0.20		
(E0) - 120	±0.30	10	± 1'
(I20) - 315	±0.50	50	± 30'
(E15) - 1000	±0.80	120	± 80'
(I20) -			± 20'



(E0) - 120	±0.30
(I20) - 315	±0.50
(E15) - 1000	±0.80

(E0) - 120	±0.30
(I20) - 315	±0.50
(E15) - 1000	±0.80

(E0) - 120	±0.30
(I20) - 315	±0.50
(E15) - 1000	±0.80

1  
1

2  
2

V  
3

3  
3

4  
4

5  
5

6  
6

7  
7

8  
8