

MOD.	LOCATION	CHANGE REFERENCE	DATE	SIGN
1		2	V 3	
2		3		

(6) - 30	+0,20	10	± 1°
(30) - 120	+0,30	20	± 30'
(120) - 315	+0,50	(50) - 50	± 20'
(315) - 1000	+0,80	(150) - 120	

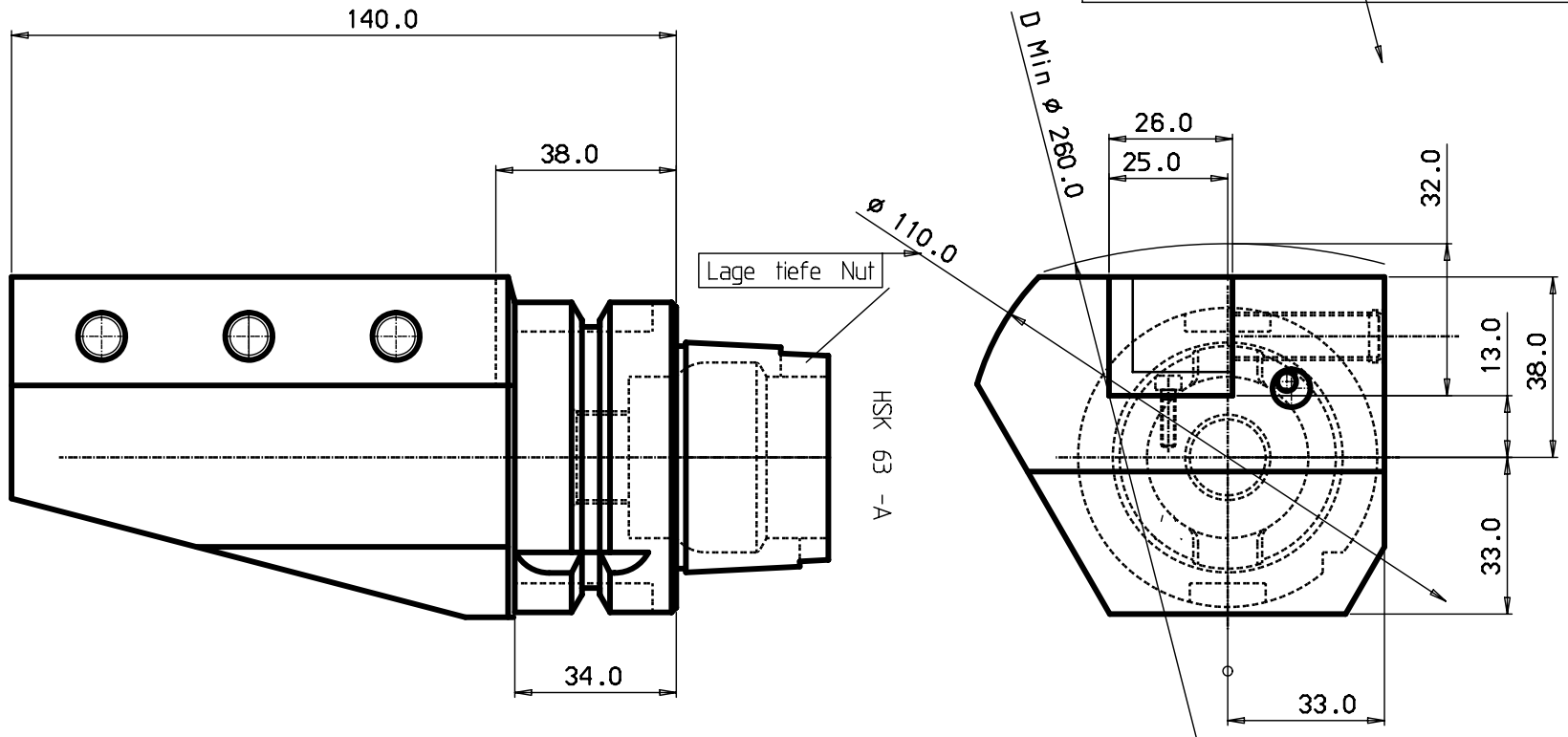
DESIGN OFFICE	DRAWING NUMBER
	HSK63A-ASHL-38140-25

DESIGN OFFICE	DRAWING NUMBER

Show in detail over the complete length of the part
 and also in the detail view of the part
 this drawing means the property of the drawing standard

100 mm
 90
 80
 70
 60
 40
 30
 20
 10
 0

MICROFILMED



6				
5				
4				
3	1	KM-Duese	5691	029-02
2	3	Schraube	3214	040-461
1				
ITEM	QNTY	DESCRIPTION	MATERIAL AND REMARKS	RELATED DRAWING

CATEGORY	DESIGNED	DRAWN	CHECKED	DATE	SCALE	SUPPERSEDES

TITLE: **Adapter**



REFERENCE	MODIFICATION	DESIGN OFFICE	DRAWING NUMBER
			HSK63A-ASHL-38140-25

Tolerance systems acc to ISO
 Surface roughness Ra um

Where tolerance not stated:
 For threads SS-iso 965/3
 For dimensions SS 715 Medium

Dimension	Tol.	Angle (Shortest adjacent side in mm)	Tol.
(6) - 30	+0,10	10	± 1°
(30) - 120	+0,20	10	± 30'
(120) - 315	+0,30	(50) - 50	± 20'
(315) - 1000	+0,50	(150) - 120	
	+0,80	(200)	

MOD.	LOCATION	CHANGE REFERENCE	DATE	SIGN
1		2	V 3	
2		3		

(6) - 30	+0,20	10	± 1°
(30) - 120	+0,30	20	± 30'
(120) - 315	+0,50	(50) - 50	± 20'
(315) - 1000	+0,80	(150) - 120	

DESIGN OFFICE	DRAWING NUMBER
	HSK63A-ASHL-38140-25