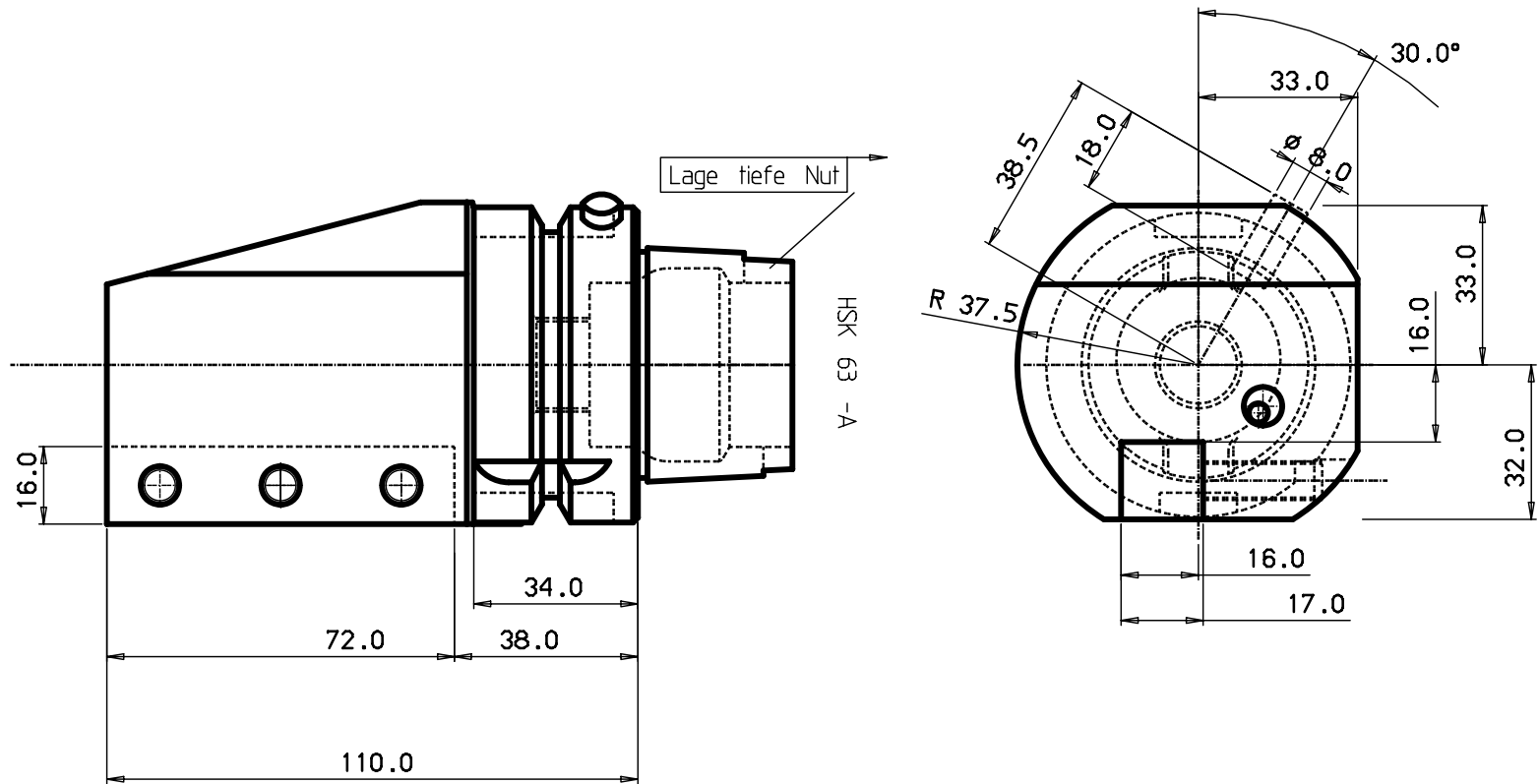


Show of hatched area in appropriate lines of any that apply
 and is not in the case of any other provisions of the drawing
 the drawing reads the property of the drawing (drawing)

MICROFILMED

100 mm
 90
 80
 70
 60
 40
 30
 20
 10
 0



6					
5					
4					
3	1	KM-Duese		5691 029-02	
2	3	Schraube			
1					

ITEM	QNTY	DESCRIPTION	MATERIAL AND REMARKS	RELATED DRAWING	LIBR	ISB
CATEGORY	DESIGNED	DRAWN	CHECKED	DATE	SCALE	SUPERSEDES

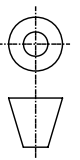
TITLE		<div style="text-align: center; font-size: 2em; font-weight: bold;">Adapter</div>																												
REFERENCE		<table border="0" style="width: 100%;"> <tr> <td>MODIFICATION</td> <td>DESIGN OFFICE</td> <td>DRAWING NUMBER</td> <td colspan="12" style="text-align: center; font-weight: bold; font-size: 1.2em;">HSK63A-ASHR-32110-16-STI</td> </tr> </table>														MODIFICATION	DESIGN OFFICE	DRAWING NUMBER	HSK63A-ASHR-32110-16-STI											
MODIFICATION	DESIGN OFFICE	DRAWING NUMBER	HSK63A-ASHR-32110-16-STI																											



Tolerance systems acc to ISO
Surface roughness Ra um

Where tolerance not stated:
For threads SS-iso 965/3
For dimensions SS 715 Medium

Dimension	Tol	Angle (Shortest adjacent side in mm)	Tol
(6) - 30	±0.10	10	± 1'
(30) - 120	±0.20	10	± 30'
(120) - 315	±0.30	10	± 30'
(315) - 1000	±0.50	120	± 30'



340-07010-2

MOD	LOCATION	CHANGE REFERENCE	DATE	SIGN