

340-0000-2

MOD	LOCATION	CHANGE	REFERENCE	DATE	SIGN
		2			
		3			

side	h	mm	±
(6)	- 30		± 0.20
(30)	- 120		± 0.30
(120)	- 375		± 0.50
(375)	- 1000		± 0.80

side	h	mm	±
(10)	- 50		± 0.1
(50)	- 120		± 0.20
(120)	-		± 0.30

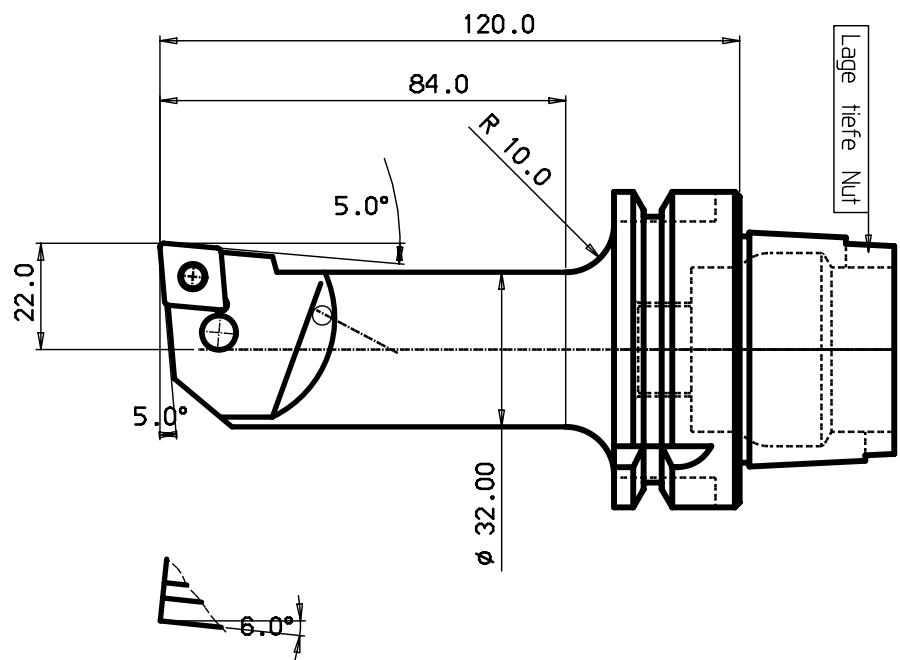
MODIFICATION	DESIGN OFFICE	DRAWING NUMBER
		HSK63A-PCLNL-22120-12

DESIGN OFFICE	DRAWING NUMBER

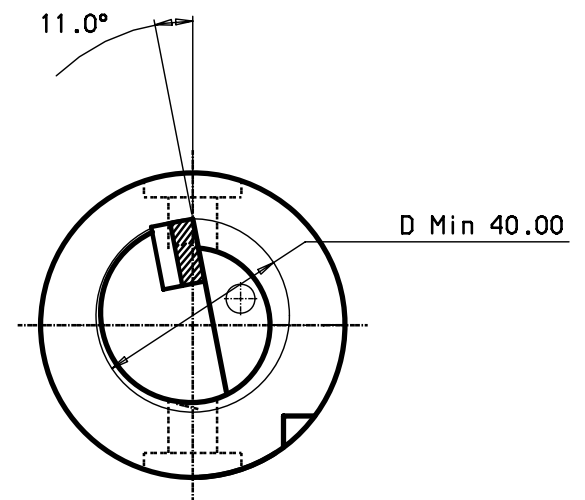
Shim of thread used to complete line of an hole and the hole is not to be covered when the pressure is applied. This drawing retains the property of 3D SHOWN DIMENSION

100 mm 90 80 70 60 40 30 20 10 0

MICROFILMED



HSK 63 - A



HM-Platte CN.. 120408

ITEM	QNTY	DESCRIPTION	MATERIAL AND REMARKS	RELATED DRAWING	UNIT	SIZE
5		Schraube		174.3-821		
4		Rohrstift		174.3-861		
3		Unterlage		171.31-850M		
2		Kniehebel		174.3-841M		
1		Schaff				

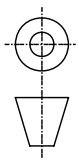
CATEGORY	DESIGNED	DRAWN	CHECKED	DATE	SCALE	SUPERSEDES

Tolerance systems acc to ISO
Surface roughness Ra um

Where tolerance not stated:
For threads SS-iso 965/3
For dimensions SS 715 Medium

Dimension	Tol	Angle (Shortest adjacent side h mm)	Tol
(6) - 30	± 0.10	10	± 0.1
(30) - 120	± 0.20	10	± 0.20
(120) - 375	± 0.30	10	± 0.30
(375) - 1000	± 0.50	10	± 0.50

MODIFICATION	DESIGN OFFICE	DRAWING NUMBER
		HSK63A-PCLNL-22120-12



340-0000-2

MOD	LOCATION	CHANGE	REFERENCE	DATE	SIGN
		2			
		3			

side	h	mm	±
(6)	- 30		± 0.20
(30)	- 120		± 0.30
(120)	- 375		± 0.50
(375)	- 1000		± 0.80

side	h	mm	±
(10)	- 50		± 0.1
(50)	- 120		± 0.20
(120)	-		± 0.30

MODIFICATION	DESIGN OFFICE	DRAWING NUMBER
		HSK63A-PCLNL-22120-12