

5

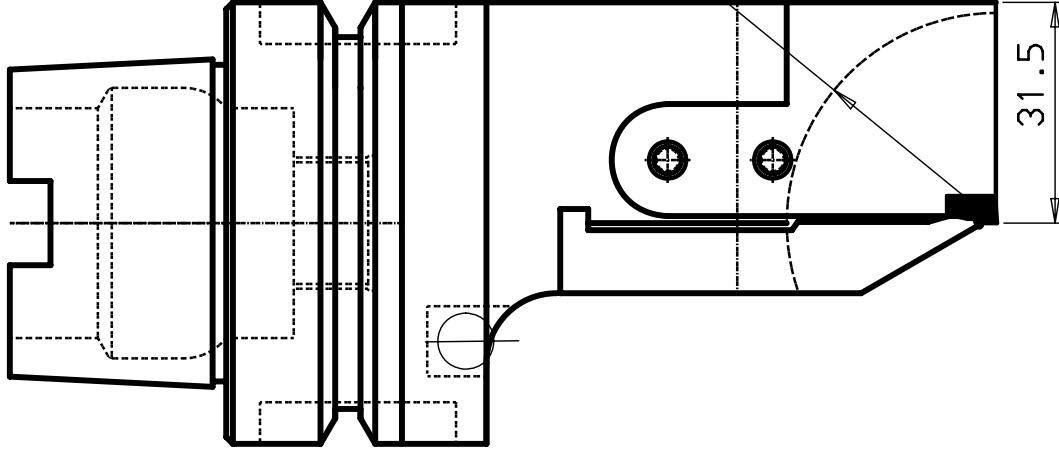
6

7

8

DESIGN OFFICE | DRAWING NUMBER

HSK 63 -A



Lage tiefe Nut

45.0°

R 30.0

31.5

30.0

4.0

20.0

110.0

HM-Platte 151.2-400

5	1	Kugelduese
4	1	Schraube
3	2	Schraube
2	1	Unterlage
1	1	Spannfinger

15127-40-30-HSK
R15127-40-30-HSK

ITEM	QNTY	DESCRIPTION	DESIGNED	DRAWN	CHECKED	DATE	MATERIAL AND REMARKS	RELATED DRAWING	SCALE	SUPERSEDES	DATE	SIZE
------	------	-------------	----------	-------	---------	------	----------------------	-----------------	-------	------------	------	------

ANS acc to ISO

SS Ra um i

not stated:

965/3

715 Medium

Angle
(Shortest adjacent side in mm.)

110	Tot
120	+ 1'
130	+ 30'
150	+ 20'
180	+ 10'

Schneidkopf



REFERENCE

MODIFICATION | ABCDEFGHIJKLMNOPRSTUVWXYZ
DESIGN OFFICE | DRAWING NUMBER

HSK63A-R151.27-20110-4

5

6

4

7

8